



Engine	Yunnei YN38GBZ1
Rated Power	65 kW (87 hp / 88 ps) @ 2,400 rpm
Operating Weight	5,180 kg
Standard Bucket Size	1.0 m ³
Standard Breakout Force	55 kN
Standard Dump Clearance	2,600 mm

816H WHEEL LOADER

816H SPECIFICATIONS >>>

ENGINE

Emission Regulation	Tier 2 / Stage II
Make	Yunnei
Model	YN38GBZ1
Rated Power	65 kW (87 hp / 88 ps) @ 2,400 rpm
Peak Torque	285 N·m @ 1,600-1,800 rpm
Number of Cylinders	4
Aspiration	Naturally aspirated
Displacement	3.8 L

TRANSMISSION

Transmission Type	Countershaft, powershift
Torque Converter	Single stage, three elements
Maximum Travel Speed, fwd	21 km/h
Maximum Travel Speed, rev	21 km/h
Number of Speed, fwd	2
Number of Speed, rev	2

AXLES

Differential Front Type	Conventional
Differential Rear Type	Conventional
Axle Oscillation	±10°

STEERING

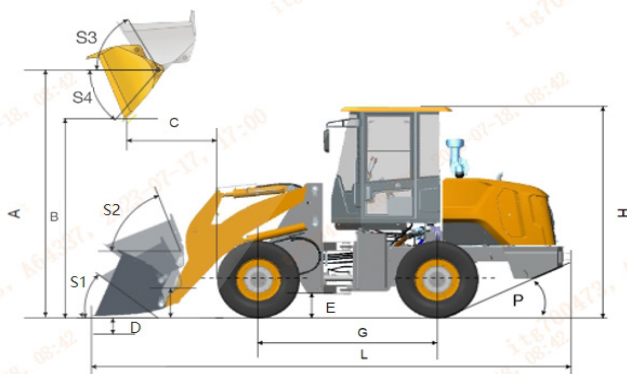
Steering Configuration	Articulated
Steering Relief Pressure	14.8 MPa

BRAKES

Service Brake Type	Caliper disc brake
Service Brake Actuation	Air over hydraulic
Parking Brake Type	Disc
Parking Brake Actuation	Mechanical

HYDRAULIC SYSTEM

Main Pump Type	Gear
Main Relief Pressure	18 MPa
Raise	4.6 s
Dump Time	1.0 s
Float Down Time	3.0 s
Fastest Total Cycle Time	8.6 s



LOADER ARM PERFORMANCE WITH STANDARD BUCKET 1.0 m³

Tipping Load - Straight (ISO 14397-1:2007)	3,900 kg
Tipping Load - Full Turn (ISO 14397-1:2007)	3,300 kg
Bucket Breakout Force	55 kN
A Maximum Hinge Pin Height	3,300 mm
B Dump Clearance at Full Height Discharge	2,600 mm
C Dump Reach at Full Height Discharge	1,090 mm
D Maximum Digging Depth, Bucket Level	30 mm
S1 Bucket Rollback at Ground Level	45 °
S2 Bucket Rollback at Carry	53 °
S3 Bucket Rollback at Maximum Height	60 °
S4 Maximum Dump Angle at Full Height	45 °

BUCKET PERFORMANCE

Reference Bucket	0.7-1.5 m ³
------------------	------------------------

DIMENSIONS

E Ground Clearance	320 mm
G Wheelbase	2,540 mm
H Cab Height	2,900 mm
J Wheel Tread	1,560 mm
K Width over Tires	1,980 mm
L Length with Bucket Down	5,825 mm
M Turn Angle, Either Side	38 °
P Rear Angle of Departure	30 °
R ₁ Turning Radius, Bucket Carry	5,300 mm
R ₂ Turning Radius, Outside of Tire	4,780 mm
W Width over Bucket	2,225 mm

TIRES

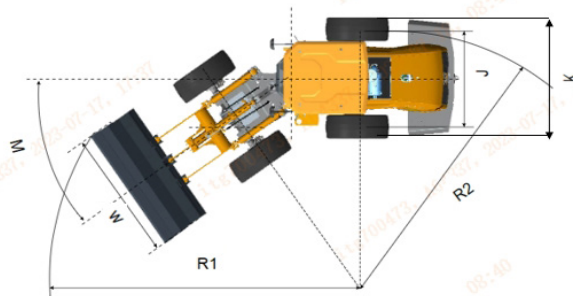
Tire Size	16/70-20 14PR
-----------	---------------

OPERATING WEIGHTS

Operating Weight	5,180 kg
------------------	----------

SERVICE CAPACITY

Fuel Tank	76 L
Engine Oil	7 L
Cooling System	13 L
Hydraulic Reservoir	65 L
Transmission and Torque Converter	25 L
Axles, each	14 L



Guangxi Liugong Machinery Co., Ltd.

No. 1 Liutai Road, Liuzhou, Guangxi 545007, PR China
T: +86 772 3886124 E: overseas@liugong.com
www.liugong.com

Specifications and designs are subject to change without notice. Machines shown may include optional equipment. Liugong standard and optional equipment may vary from region to region. Please consult your Liugong dealer for information specific to your area. Engine power kW is converted to horsepower (1 kW=1.3596 ps and 1 kW=1.3410 hp) in this file.

08/2023 Designed by LiuGong
Replace the previous versions of 07/2023